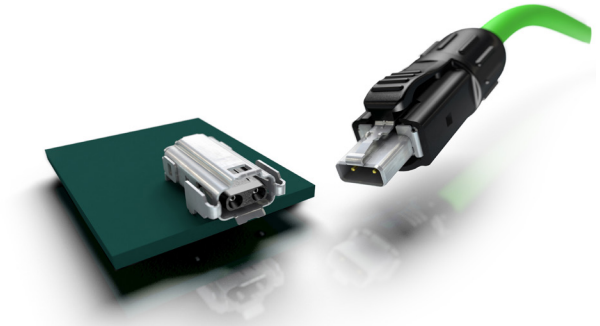


INTRODUCING SPE T1 INDUSTRIAL CONNECTORS IP20

- Small diameter, more flexible and less heavy cables enable the application to move faster and use less energy
- Small connector formfactor allows miniaturization in next generation applications



Instead of transmitting Ethernet over two pairs (for Fast Ethernet (100Mb/s)) or four pairs (for Gigabit Ethernet), Single Pair Ethernet (SPE) specifies Ethernet transmission over only one pair of copper wires.

PoDL (Power over Data Line) enables powering the remote device via the same pair of wires.

APPLICATIONS

- Sensors
- Actuators
- Switches
- Machinery
- Robotics

ELECTRICAL

- 360° shielding
- PoDL support
- Operational voltage 60 V DC
- Dielectric withstanding voltage Contact-contact 1kV DC
- Dielectric withstanding voltage Contact-shield 1.5kV AC RMS

MATERIALS

- Cable connector:
 - Housing, nut, insulation body: PA, black
 - Shielding: Stainless steel
- PCB connector

LEARN MORE

- [SPE T1 Industrial connectors IP20 product page](#)
- [SPE T1 Industrial connectors IP20 product flyer](#)
- [SPE T1 Industrial connectors IP20 parts list](#)
- [SPE T1 Industrial connectors IP20 presentation](#)
- [SPE T1 Industrial connectors IP20 video](#)

BENEFITS

- Small diameter, more flexible and less heavy cables enable the application to move faster and use less energy
- Small connector formfactor allows miniaturization in next generation applications
- Easy and quick cable connector assembly reduces installation cost
- Reflow solderable SPE board connector supports latest Industrial assembly processes
- Cable connector uses high reliable crimp contacts, reducing downtime

FEATURE

- One twisted pair cable
- Up to 1 Gb/s communication
- IEC63171-6 standardized Interface

MECHANICAL

- THR solder (board) and crimp contact (cable)
- Operating temperature range: -40° C - +85° C
- Conductor cross section: AWG 26-22
- Wire outer diameter: 4.5 - 5.5 mm

STANDARDS

- IEC 63171-6
- UL1977